

1:400 Scale Tropical Single Runway Airport (400-TSR-0A)

Thank you for purchasing the 1:400 scale Tropical Single Runway Airport Diorama. I know you will be pleased with the final product. Before you get started, here is a list of what you'll need:

- Paper, 70 pages. For best results I recommend using a High Quality Matte Photo Paper; the thicker the paper, the better
- X-Acto knife, with extra blades
- Cutting board
- Metal ruler
- Glue stick
- Handy Tak reusable adhesive (or equivalent – office supply store)
- Tape
- Extra capacity ink cartridge for printer
- Latest version of Adobe Reader (you can download it here: <http://www.adobe.com/products/acrobat/readstep2.html>)



1:400 Scale Tropical Single Runway Airport (400-TSR-0A)

The completed diorama consists of 70 tiles (or foils), covering an area of 4 ft by 8 ft (1.22 m by 2.44 m). It can be mounted on a standard sheet of plywood, or a two-inch thick sheet of Styrofoam (see below). The Styrofoam is sturdy enough, and a lot lighter. You can find Styrofoam sheets at your local home center store, in the insulation isle.



Styrofoam Sheet

I recommend printing a row at a time so that you can keep an eye on the printer's ink level (my HP printer uses about half of an "XL" cartridge). If possible, start with a fresh ink cartridge. Rows are defined as follows:

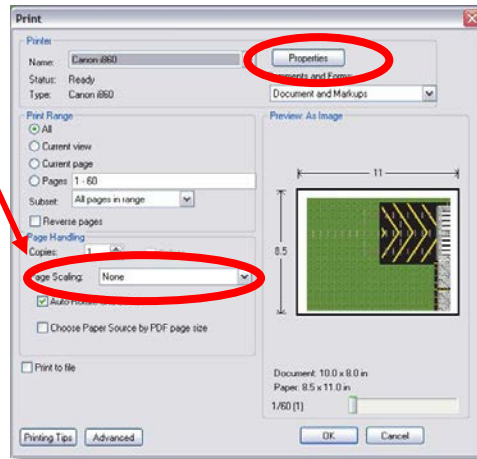
- Row 1: tiles 1 – 10
- Row 2: tiles 11 – 20
- Row 3: tiles 21 – 30
- Row 4: tiles 31 – 40
- Row 5: tiles 41 – 50
- Row 6: tiles 51 – 60
- Row 7: tiles 61 – 70

To print the tiles, use the following settings:

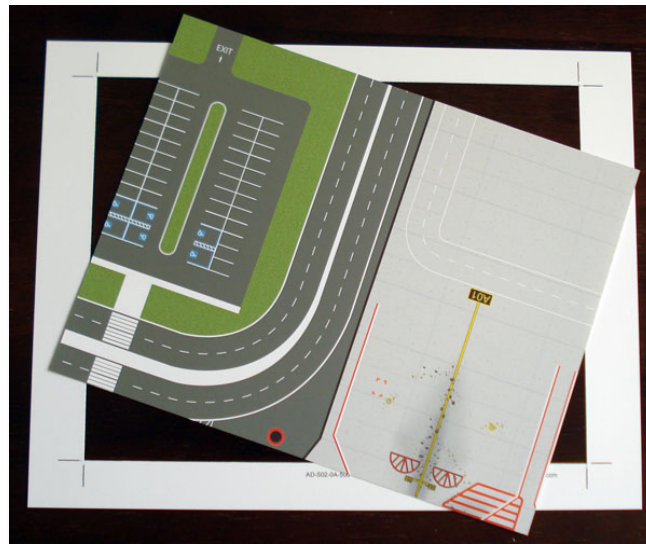
1. Click on Print, then click on the Properties button next to the printer name, and set the printer properties to match the type of paper to be used, and set the printing quality to the highest setting. NOTE: The resolution on the computer screen is not as good as the resolution of the printed material.

1:400 Scale Tropical Single Runway Airport (400-TSR-0A)

2. Set Page scaling to NONE.

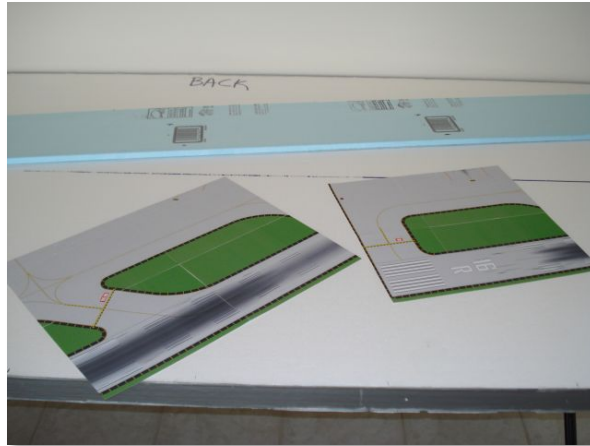


After the tiles are printed, use the “crop marks” on each page to guide you in cutting the tiles. Do not cut all the way across the paper because you will lose the final crop mark. Instead, cut in between the marks, creating a “frame” around the tile (see picture below). The tile should just pop-out.

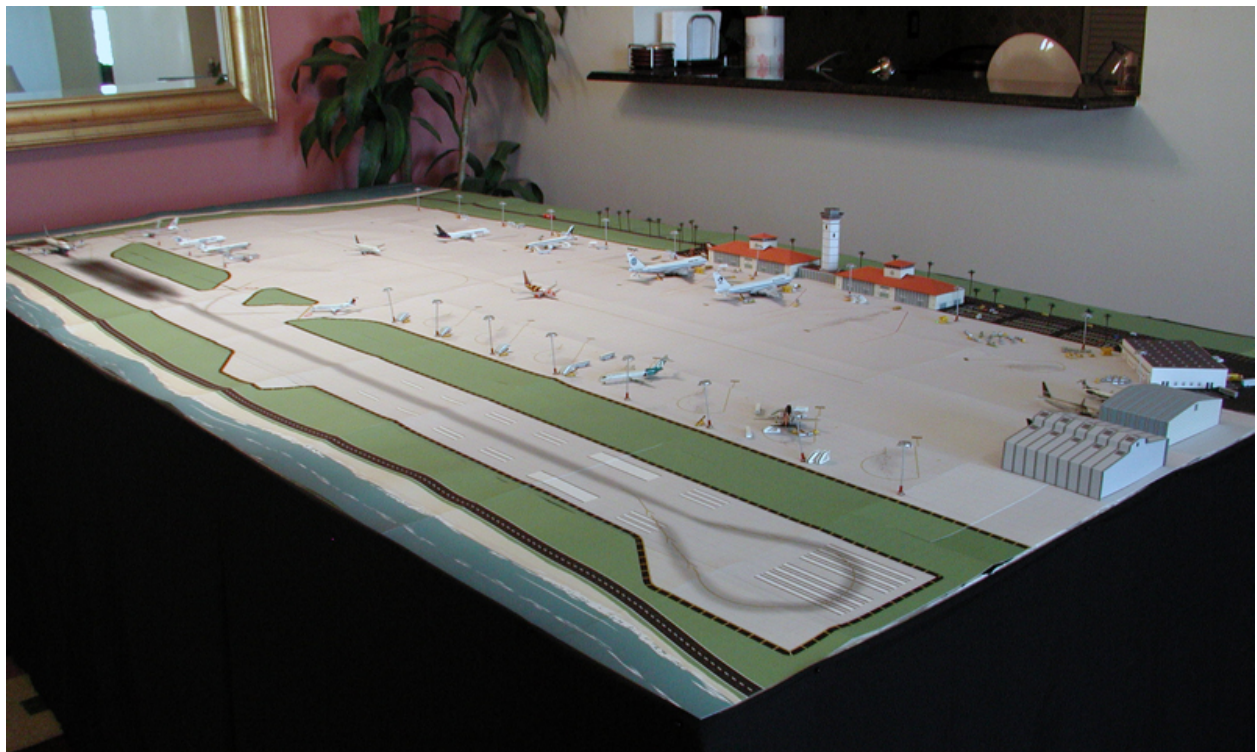


This will take a while, so get yourself a good movie to keep you company. Once you have cut all the tiles, tape them in groups of four, making a “bigger tile”. This will help in the final assembly.

1:400 Scale Tropical Single Runway Airport (400-TSR-0A)



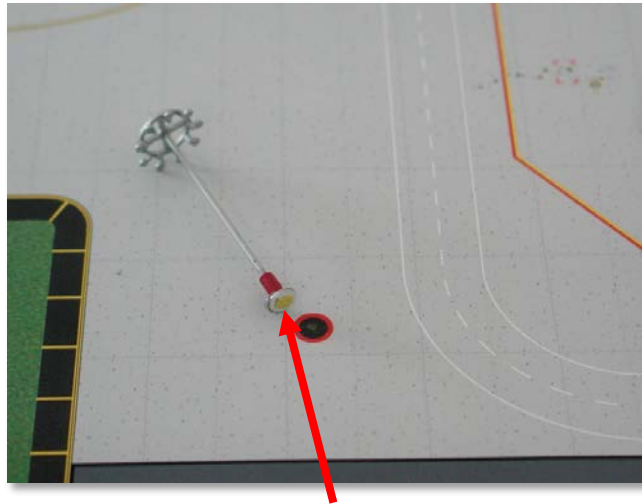
If you decide to glue the diorama to the board, first lay out all the tiles on the board to check for fit and trim (trimming may be necessary around the edges). Once you are happy with the layout, start gluing the tiles to the board using the glue stick. I recommend using the glue stick because, depending on the paper quality, liquid glue can be absorbed by the paper and create “bubbles”. If you want to try other type of glue, experiment on a single tile first.



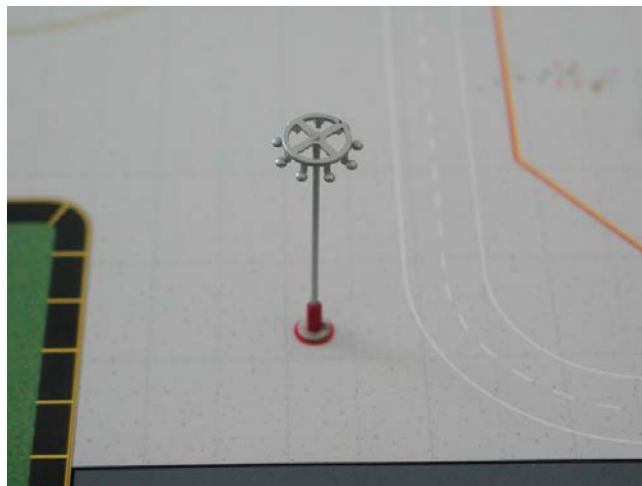
Finished Diorama

1:400 Scale Tropical Single Runway Airport (400-TSR-0A)

TIP: To attach lamp posts, trees, etc. to the diorama, use the Handi Tak reusable adhesive. Take a small piece, roll it into a small ball and stick it under the accessory, then press the accessory to the diorama (see below).



Handi Tak piece



I hope you enjoy your new Airport. If you have any questions or comments, please contact us at info@airport-diorama-designs.com.

1:400 Scale Tropical Single Runway Airport (400-TSR-0A)

