

1:400 Scale Single Runway #4G (AD-SR04G-0A-400)

Thank you for purchasing the 1:400 scale Airport Diorama Single Runway #4G. I know you will be pleased with the final product. Before you get started, here is a list of what you'll need:

- Paper, about 80 pages. For best results I recommend using a High Quality Matte Photo Paper; the thicker the paper, the better
- X-Acto knife, with extra blades
- Cutting board
- Metal ruler
- Glue stick
- Handy Tak reusable adhesive (or equivalent – office supply store)
- Tape
- Extra capacity ink cartridge for printer
- Latest version of Adobe Reader (you can download it here: <http://www.adobe.com/products/acrobat/readstep2.html>)



1:400 Scale Single Runway #4G (AD-SR04G-0A-400)

The completed diorama consists of 77 tiles (or foils), covering an area of 4 ft by 8 ft (1.22 m by 2.44 m). It can be mounted on a standard sheet of plywood, or a two-inch thick sheet of Styrofoam (see below). The Styrofoam is sturdy enough, and a lot lighter. You can find Styrofoam sheets at your local home center store, in the insulation aisle.



Styrofoam Sheet

I recommend printing a row at a time so that you can keep an eye on the printer's ink level (my HP printer uses about half of an "XL" cartridge). If possible, start with a fresh ink cartridge. Rows are defined as follows:

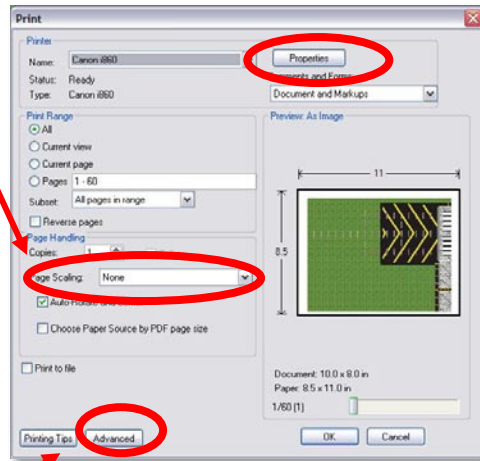
- Row 1: tiles 1 – 11
- Row 2: tiles 12 – 22
- Row 3: tiles 23 – 33
- Row 4: tiles 34 – 44
- Row 5: tiles 45 – 55
- Row 6: tiles 56 – 66
- Row 7: tiles 67 – 77

To print the tiles, use the following settings:

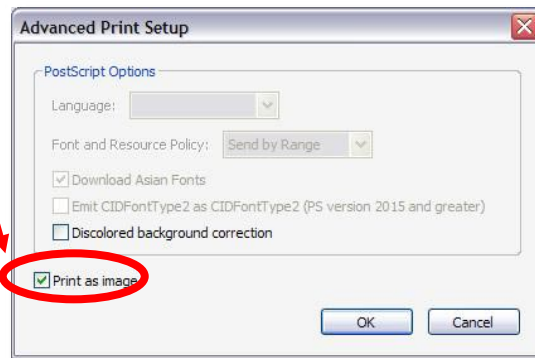
1. Click on Print, then click on the Properties button next to the printer name, and set the printer properties to match the type of paper to be used, and set the printing quality to the highest setting. NOTE: The resolution on the computer screen is not as good as the resolution of the printed material.

1:400 Scale Single Runway #4G (AD-SR04G-0A-400)

2. Set Page scaling to NONE.

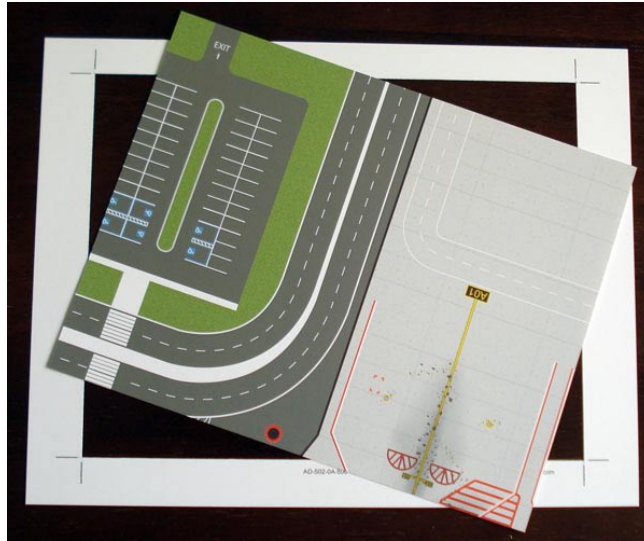


1. **VERY IMPORTANT:** Click on the Advanced button and select “Print as image” on the Advanced Print Setup screen. You **MUST** do this to prevent the printing process from hanging when the printer tries to “flatten” the image.

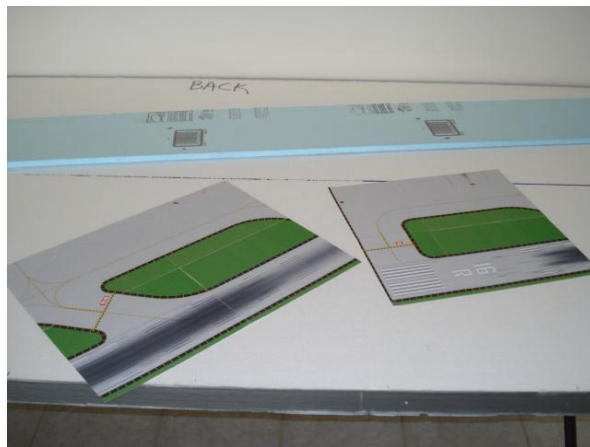


After the tiles are printed, use the “crop marks” on each page to guide you in cutting the tiles. Do not cut all the way across the paper because you will lose the final crop mark. Instead, cut in between the marks, creating a “frame” around the tile (see picture below). The tile should just pop-out.

1:400 Scale Single Runway #4G (AD-SR04G-0A-400)



This will take a while, so get yourself a good movie to keep you company. Once you have cut all the tiles, tape them in groups of four, making a “bigger tile”. This will help in the final assembly.



If you decide to glue the diorama to the board, first lay out all the tiles on the board to check for fit and trim (trimming may be necessary around the edges). Once you are happy with the layout, start gluing the tiles to the board using the glue stick. I recommend using the glue stick because, depending on the paper quality, liquid glue can be absorbed by the paper and create “bubbles”. If you want to try other type of glue, experiment on a single tile first.

1:400 Scale Single Runway #4G (AD-SR04G-0A-400)



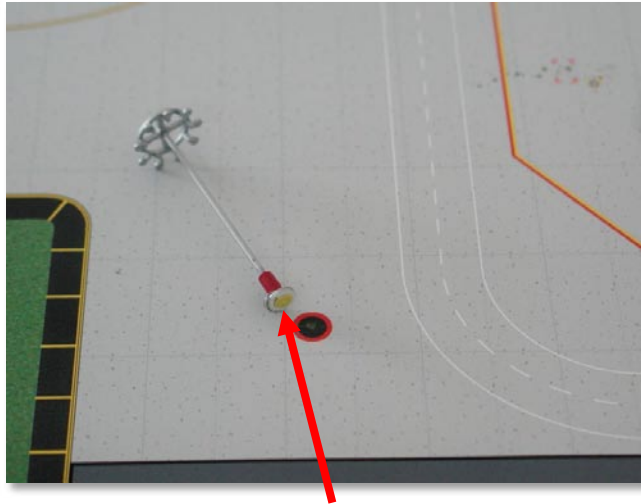
Finished Diorama



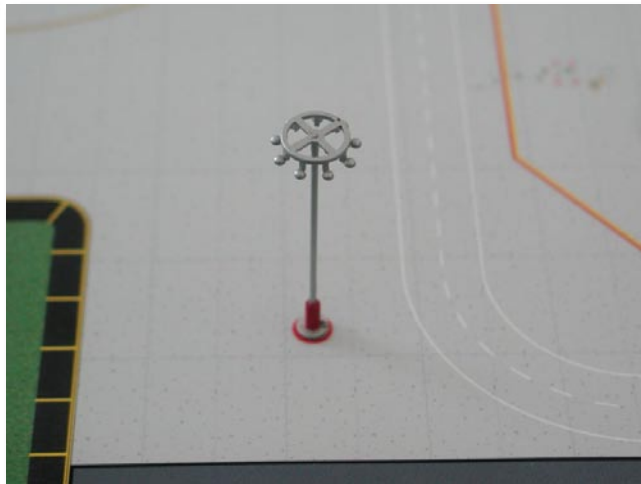
Finished Diorama with "all the trimmings"

1:400 Scale Single Runway #4G (AD-SR04G-0A-400)

TIP: To attach lamp posts, trees, etc. to the diorama, use the Handi Tak reusable adhesive. Take a small piece, roll it into a small ball and stick it under the accessory, then press the accessory to the diorama (see below).



Handi Tak piece

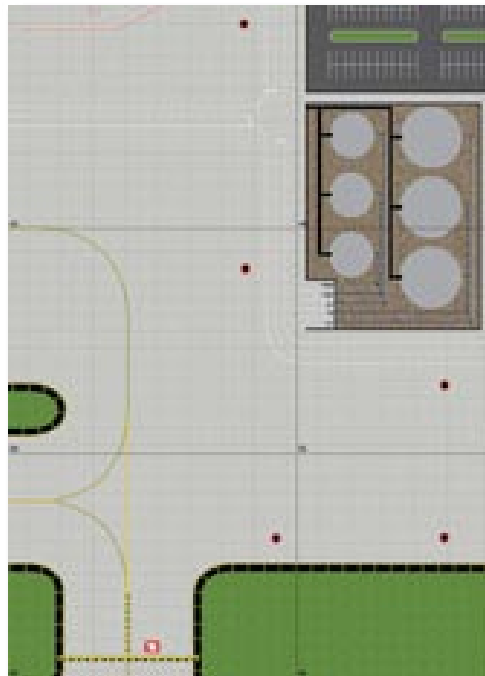


I hope you enjoy your new Airport. If you have any questions or comments, please contact us at info@airport-diorama-designs.com.

1:400 Scale Single Runway #4G (AD-SR04G-0A-400)

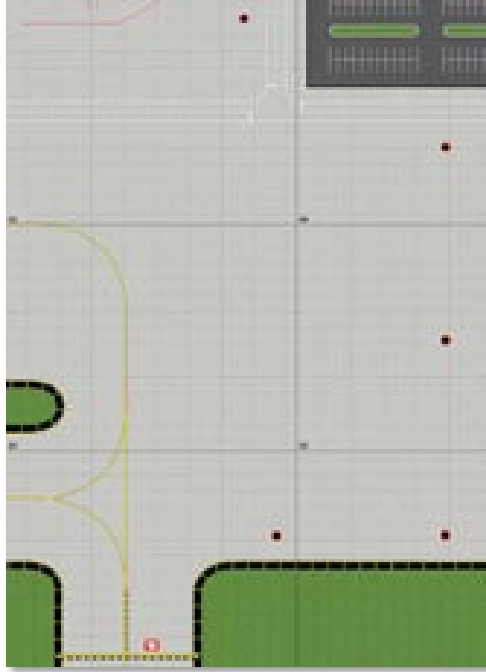
Bonus Area

This diorama includes one bonus area. The bonus area is on the lower-right corner (Tiles 43, 44, 54, 55, 65 and 66). To use the option, print the optional tiles, and replace the default tiles.



Bonus Area – Default Configuration

1:400 Scale Single Runway #4G (AD-SR04G-0A-400)

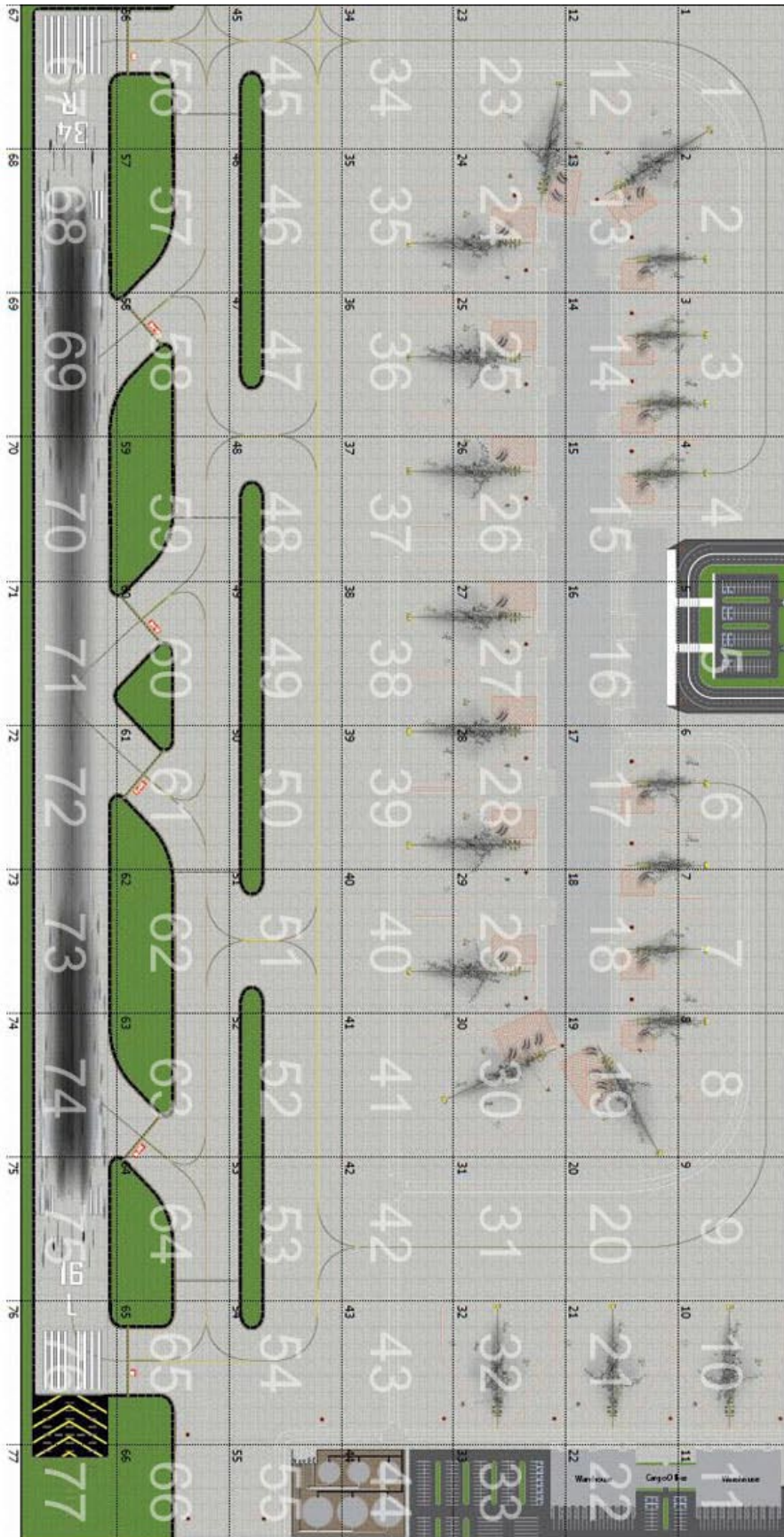


Bonus Area, Option 1 – Clean area



Bonus Area, Option 2 – Commuter Terminal

1:400 Scale Single Runway #4G (AD-SR04G-0A-400)



Airport Tile Layout