

Airport Cargo Complex #1 (AD-CC01-0A)

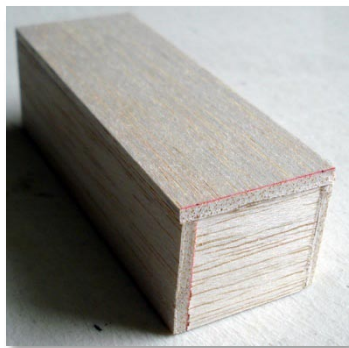
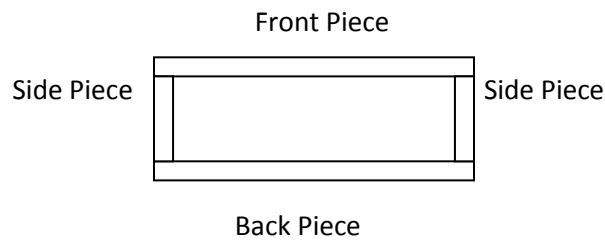
Thank you for purchasing the Airport Cargo Complex Kit #1. I know you will be pleased with the final product. Before you get started, here is a list of what you'll need:

- Paper. For best results I recommend using a High Quality Matte Photo Paper for the Warehouse building exterior pages and Premium Glossy Photo Paper for the Cargo Building; the thicker the paper, the better.
- One piece of Balsa Wood for the frame box, 1/8 in by 4 in by 36 in (0.32 cm by 10.2 cm by 91.4 cm)
- X-Acto knife
- Cutting board
- Metal ruler
- Stick glue
- Cement glue for wood models (recommended, find it at a local hobby store)
- Pen
- Very fine sandpaper
- Latest version of Adobe Reader (you can download it here: <http://www.adobe.com/products/acrobat/readstep2.html>)



Airport Cargo Complex #1 (AD-CC01-0A)

1. Open file AD-CC01-0A.pdf. The pages are organized as follows:
 - Page 1 – Cargo Building frame template, for Balsa wood.
 - Page 2 – Warehouse Building frame template, for Balsa Wood, build two of these.
 - Page 3 – Building exterior Warehouse - Regular, print on Matte photo paper.
 - Page 4 – Building exterior Warehouse - Brick, print on Matte photo paper.
 - Page 5 – Warehouse Roof, print on Matte photo paper.
 - Page 6 – Building exterior Cargo Building, print on Glossy photo paper.
2. Using templates 1 and 2, cut wood pieces and construct one box for the Cargo Building and two boxes for the Warehouse Buildings. Assemble the boxes by gluing first the front and back pieces to the side pieces, followed by the top piece.



Cargo Building Box

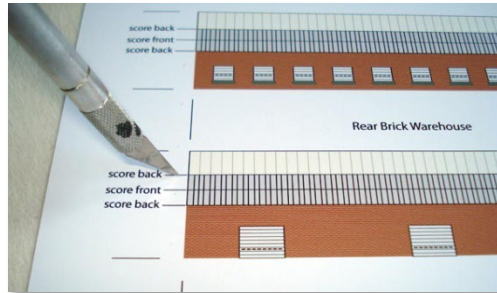


Warehouse Building Box

3. Print and cut the Building exterior pieces. For the Warehouse Buildings there are two options: Regular or Brick front. Print two sets of the one you like best.

Airport Cargo Complex #1 (AD-CC01-0A)

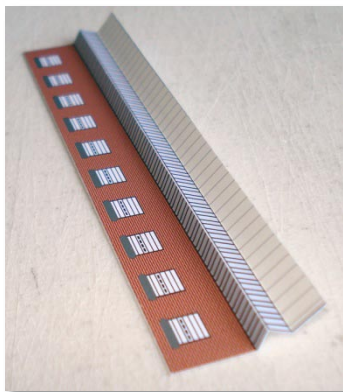
- The Front and Back of the Warehouse have a built-in awning. To create this effect, this piece needs to be folded. In order to make this a lot easier, make a puncture mark with the X-acto knife on each of the lines labeled "score back" (8 total). Make sure it goes all the way through the paper.



- After making all 8 marks, turn the paper around and draw a line in between the puncture marks. Using the metal ruler and the X-acto knife, **score LIGHTLY** a line between the marks. This will help when folding the paper.

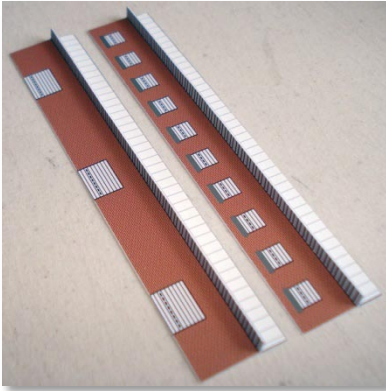


- Go back to the front of the paper, and **score LIGHTLY** the line labeled "score front". Cut the pieces out of the page. Fold the Warehouse Front and Back pieces as follows:



Airport Cargo Complex #1 (AD-CC01-0A)

- Put a bit of glue on the back of the fold, and press together to create the awning.



- Cut out the Roofs for the Cargo and Warehouse Buildings. With a magic marker paint black the edge of the paper.

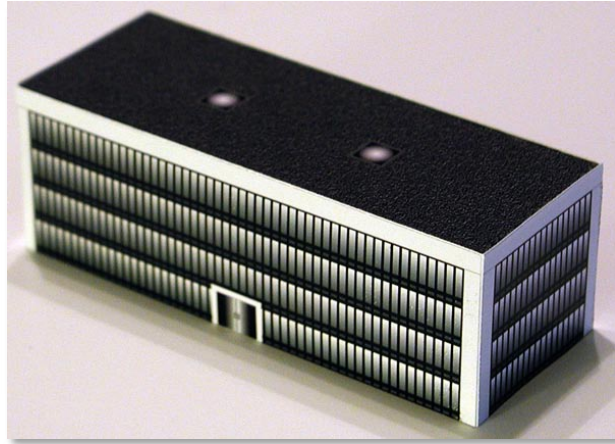


- Glue the roofs to the top of the boxes.
- Glue the Warehouse exteriors to the warehouse boxes.
- Print the Cargo Building faces on Glossy Paper. Just as before cutting the pieces out, **score** **LIGHTLY** using the lines labeled "score". This will help when folding. Cut out the faces, and bend at score mark. Glue the faces to the building boxes.

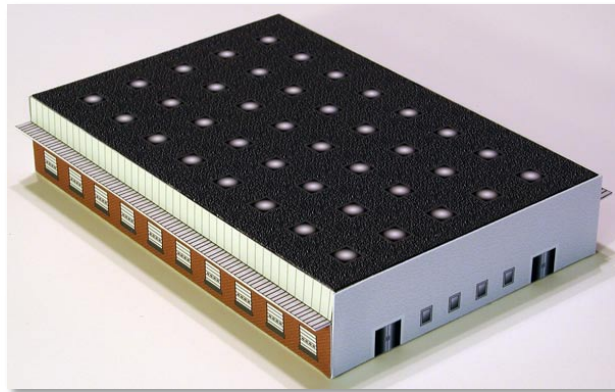


- Your Cargo Complex is Done!! Here are the finished buildings:

Airport Cargo Complex #1 (AD-CC01-0A)



Cargo Building



Warehouse Building – Brick front



Warehouse Building – Regular front

Airport Cargo Complex #1 (AD-CC01-0A)

Here are some pictures of the final product all put together:



I hope you enjoy your new Airport Cargo Complex. If you have any questions or comments, please contact us at info@airport-diorama-designs.com.